

# FJ SERIES



## Metal Duct Fan



### Product description ▶▶

- ❖ High Speed Industrial Iron Exhaust Fan Ventilation Extractor Kitchen, Office, living room Bathroom Wall mounted Exhaust Fan

### Features ▶▶

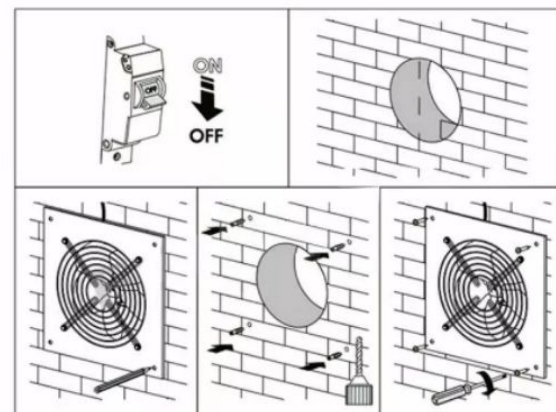
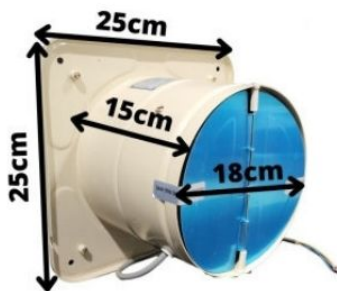
- ❖ Made of iron material, hard to deformation and with long service life.
- ❖ Surface baking varnish technology, more attractive, and not rusty.
- ❖ Seven blades, stronger suction, enhance ventilation pressure.
- ❖ Ultra-quiet copper motor, powerful, effective cooling, fast speed and ultra-quiet.
- ❖ With anti-backflow vent, windproof and rainproof.

### Specifications ▶▶

- ❖ **Metal Finished** The exhaust fan is made of high-quality metal material, is not easy to be deformed, has excellent workmanship, durable frame and long service life.
- ❖ **Copper & Ball Bearing Motor** It is durable and has a built-in copper motor with thermal protection for continuous operation. Dual ball bearing Motor provide high ventilation efficiency and very low noise during operation. (except 4 inch)
- ❖ **Anti-backflow vent** With anti-backflow vent, windproof and rainproof.

### Technical Parameters ▶▶

Model	Diameter	Voltage	Frequency	Speed	Power	Air flow	Weight	Noise
FJ	mm/Inc	V	Hz	rpm	W	m <sup>3</sup> /h	Kg	dB(A)
FJ-20	200 (8")	220	50	2800	127	1380	3	60



081-449-5635, 065-359-6297

02-398-6749  chatwanee



chatwanee@gmail.com

